

**SPECIFICATIONS**  
**EB-725W/725Wi/735F/735Fi**

MODEL NUMBER	EB-725W	EB-725Wi	EB-735F	EB-735Fi
<b>SKU Number</b>	V11H99052 /	V11H99052 /	V11HA00052	V11H997052 /
<b>Projection Technology</b>	RGB liquid crystal shutter projection system			
<b>Specifications of Main Parts</b>				
LCD	Size 0.59" (C2Fine)		0.61" (C2Fine)	
Projection Lens	Resolution WXGA (1280 x 800)			
	Type No Optical Zoom / Focus (Manual)			
	F-Number 1.60			
	Focal Length 3.7mm			
	Zoom Ratio 1.0 - 1.35 (Digital Zoom)			
Light Source	Type Laser Diode			
	Life (Normal / Quiet / Extended) 20,000 / 20,000 / 30,000 hrs			
<b>Screen Size (Projected Distance)</b>	65" - 120" [38.5 - 72.5 cm]	65" - 100" [38.5 - 60.1 cm]	65" - 120" [37.2 - 70.3 cm]	65" - 100" [37.2 - 58.3 cm]
	@ 16:10	@ 16:10	@ 16:9	@ 16:9
	64" - 116" [39 - 72 cm]	64" - 100" [39 - 61.8 cm]	60" - 110" [36.9 - 69.2 cm]	@ 16:6
	@ 16:9	@ 16:9		
<b>Brightness*</b>	White Light Output (Normal / Quiet) 4,000lm / 2,800lm		3,600lm / 2,500lm	
	Colour Light Output 4,000lm / 2,800lm		3,600lm / 2,500lm	
<b>Contrast Ratio</b>	Over 2,500,000 : 1			
<b>Internal Speaker(s)</b>				
Sound Output	16W Monoaural			
<b>Geometric Correction</b>				
Vertical / Horizontal Keystone	±3° / ±3°			
Quick Corner	Yes (Manual)	Yes (Auto & Manual)	Yes (Manual)	Yes (Auto & Manual)
<b>Connectivity</b>				
Analog Input	D-Sub 15Pin Composite	2 (Blue, Black) RCA x 1 (Yellow)		
Digital Input	HDMI	3 (HDCP2.3)		
Analog Output Terminal	D-Sub 15Pin	1 (Black) (in common with Computer 2)		
Audio Input	Stereo Mini Jack	3		
Mic Input	Stereo Mini Jack	1		
Audio Output	Stereo Mini Jack	1		
Others	USB Type A USB Type B	2 (for Saving and Reading Data via USB, Firmware Update, Copy OSD Settings) (for Firmware Update, Copy OSD Settings)		
Control I/O	Mic I/O	Stereo Mini x 1		
	RS-232C	D-Sub 9pin x 1		
Network	Interactive Sync	N/A	In x 1, Out x 1	N/A
	Touch Unit Control	N/A	Mini DIN 8pin x 1	N/A
Wireless LAN - Built-in	Supported Speed For Each Mode	Infrastructure: IEEE 802.11b (2.4GHz): 11Mbps <sup>2</sup> , IEEE 802.11g (2.4GHz): 54Mbps <sup>2</sup> , IEEE 802.11n (2.4GHz): 72.2Mbps <sup>2</sup> , IEEE 802.11a (5GHz): 54Mbps <sup>2</sup> , IEEE 802.11n (5GHz): 150Mbps <sup>2</sup> , IEEE 802.11ac (5GHz): 325Mbps <sup>2</sup> Access Point (Wi-Fi Direct): IEEE 802.11g (2.4GHz): 54Mbps <sup>2</sup> , IEEE 802.11n (2.4GHz): 72.2Mbps <sup>2</sup> , IEEE 802.11a (5GHz): 54Mbps <sup>2</sup> , IEEE 802.11n (5GHz): 150Mbps <sup>2</sup> , IEEE 802.11ac (5GHz): 325Mbps <sup>2</sup>		
	Supported Mode	Infrastructure, Access Point (Wi-Fi Direct)		
Miracast / Screen Mirroring Built-in	Supported Speed For Each Mode	Infrastructure: IEEE 802.11b (2.4GHz): 11Mbps <sup>2</sup> , IEEE 802.11g (2.4GHz): 54Mbps <sup>2</sup> , IEEE 802.11n (2.4GHz): 72.2Mbps <sup>2</sup> , IEEE 802.11a (5GHz): 54Mbps <sup>2</sup> , IEEE 802.11n (5GHz): 150Mbps <sup>2</sup> , IEEE 802.11ac (5GHz): 325Mbps <sup>2</sup> Access Point (Wi-Fi Direct): IEEE 802.11g (2.4GHz): 54Mbps <sup>2</sup> , IEEE 802.11n (2.4GHz): 72.2Mbps <sup>2</sup> , IEEE 802.11a (5GHz): 54Mbps <sup>2</sup> , IEEE 802.11n (5GHz): 150Mbps <sup>2</sup> , IEEE 802.11ac (5GHz): 325Mbps <sup>2</sup>		
	Supported Mode	Infrastructure, Access Point (Wi-Fi Direct)		
Wireless Security	Supported Speed For Each Mode	Infrastructure: OPEN, WPA2 / WPA3-PSK, WPA2 / WPA3-EAP ; Supported EAP Type: PEAP, PEAP-TLS, EAP-TLS, EAP-Fast ; Access Point (Wi-Fi Direct): WPA2-PSK (AES)		
	Supported Mode	Infrastructure, Access Point (Wi-Fi Direct)		
<b>Interactive Specification (EB725Wi &amp; EB-735Fi)</b>				
Interactive Unit	Infrared			
Technology	Digital Pen (Easy Interactive Pen A & B)			
Input Devices	Finger Up to 6 Fingers (Optional)			
Connection To Computer	USB, Network			
Calibration	Pen: Auto / Manual (25 Points)			
Functions	Hover, Right Click, Auto Adjust Pen Area			
Pen Unit	161 x 24 mm (diameter) maximum			
Dimension	30g (Excluding a battery)			
Weight	65 x 422 x 40 mm			
Touch Unit	600g			
Maximum Dimension (D x W x H)	Operating Temperature <sup>4</sup>			
Weight	Single Use			
Operating Temperature <sup>4</sup>	0 - 2,286 m (0 - 7,500 ft); 0 °C - 40 °C [41 °F - 104 °F] ; 20% to 80% Humidity, No Condensation			
Single Use	Over 2,286 - 3,048 m (7,500 - 10,000 ft); 0 - 35 °C [41 - 95 °F] ; 20%-80% Humidity, No Condensation			
Multi-projection Use	0 - 2,286 m (0 - 7,500 ft); 0 °C - 35 °C [41 °F - 95 °F] ; 20% to 80% Humidity, No Condensation			
Operating Altitude	Over 2,286 - 3,048 m (7,500 - 10,000 ft); 0 - 30 °C [41 - 86 °F] ; 20%-80% Humidity, No Condensation			
Direct Power On / Off	Over 1,500 m / 4,921 ft, with High Altitude Mode: 0 - 3,048 m (0 - 10,000 ft)			
Start-Up Period	Yes			
Quick Start-Up	Less than 8 seconds, Warm-up Period: 30 seconds			
Cool Down Period	Less than 5 seconds			
Air Filter	Type	Electrostatic Filter		
Power Supply Voltage	Maintenance Cycle <sup>9</sup>	12,000 hours		
Power Consumption (220 - 240V)	100 - 240 V AC ±10%, 50/60 Hz			
Lamp On (Normal / Eco)	255W / 197W			
Standby (Network On / Off)	2.0W / 0.5W			
Dimension Excluding Feet (D x W x H)	395 x 356 x 133 mm			
Weight (with cable cover)	Approx. 5.7kg		Approx. 5.8kg	
Fan Noise (Normal / Eco)	36dB / 26dB		Approx. 5.7kg	

\* Pixel shifting technology achieves Full HD resolution on screen.  
<sup>1</sup> Colour brightness (colour light output) and white brightness (white light output) will vary depending on usage conditions. Colour light output measured in accordance with IDMS 15.4; white light output measured in accordance with ISO 21118.  
<sup>2</sup> Maximum speed and range is achievable when used with same enhanced mode technology. Actual data rates, features and performance may vary depending on your computer system, the environment and other factors.  
<sup>3</sup> These modes and actual data throughputs depend on supported wireless mode of source devices and/or environmental conditions.  
<sup>4</sup> When environmental temperature becomes high, the brightness becomes dark automatically.  
<sup>5</sup> When used in the general office environment (the amount of floating dust: 0.04 - 0.2 mg/m<sup>3</sup>). Based on the Epson's in-house test results.

**Sales Enquiries**  
**800 120 5564**

[EpsonSEA](#) [EpsonSEA](#) [EpsonSEA](#) [EpsonSEA](#) [EpsonSEA](#) [EpsonSEA](#) [EpsonSEA](#)  
 For latest specifications, visit [www.epson.com.sg/projectors](http://www.epson.com.sg/projectors) or call **800 120 5564**.

**Epson Singapore Pte Ltd** 438B Alexandra Road, #04-01/04 Block B, Alexandra TechnoPark, Singapore 119968. Tel: (65) 6586-5500  
**Epson Customer Care Center** 100G Pasir Panjang Road, #01-09 Interlock Centre, Singapore 118523. Epson Helpdesk: 800 120 5564. Opening hours: Monday - Friday, 9am to 5pm. Closed on Saturday, Sunday and Public Holiday. Please refer to [www.epson.com.sg/contact](http://www.epson.com.sg/contact) for updated opening hours

**EPSON**  
EXCEED YOUR VISION

**Supplied Accessories**  
**EB-725W / EB-735F**  
 Power Cable: 1.8m x 1  
 Remote Control with 2xAAA Battery

**EB-725Wi / EB-735Fi (With Interactivity)**  
 Power Cable: 1.8m x 1  
 Remote Control with 2xAAA Battery  
 USB Cable for HCB: 5m x 1  
 Interactive Pens: 2 pens with 2xAAA Battery  
 Pen Stand: 1  
 Pen Tip (Felt): 4  
 Pen Tip (Teflon): 2  
 Finger Touch Unit: 1\*  
 Corner Marker for Automatic Geometry Adjustment: 4  
 Magnet for Corner Marker: 4

**Optional Accessories**  
 Air Filter:ELPAF60  
 USB Extension Cable: ELPKC31  
 Remote Control Cable Set\*: ELPKC28 (10m x 2)  
 Setting Plate: ELPMB62  
 Table Projection Mount: ELPMB29  
 Ceiling Mount: ELPMB23  
 Wall Mount for FTU\*: ELPMB63  
 Wireless LAN unit: ELPAP11  
 Finger Touch Unit\*\*: ELPFT01  
 Easy Interactive Pen 1\*\*: ELPN05A  
 Easy Interactive Pen 2\*\*: ELPN05B  
 Replacement Hard Pen Tips\*\*: ELPPS03  
 Replacement Soft Pen Tips\*\*: ELPPS04

\* Only available for EB-735Fi only.  
 \*\* EB-725Wi & EB-735Fi only. Refer to compatibility list.  
 \*\*\* Optional only for EB-725Wi.



©2020 Epson Singapore Pte Ltd. All Rights Reserved. Reproduction in part or in whole, without the written permission from Epson, is strictly prohibited.

EPSON and EXCEED YOUR VISION are registered trademarks of Seiko Epson Corporation.

All other product names and other company names used herein are for identification purposes only and are the trademarks or registered trademarks of their respective owners.

Epson disclaims any and all rights in those marks. Projected images shown herein are simulations. The actual product design and contents may vary. Specifications are subject to change without notice and may vary between countries. Please check with local Epson offices for more information.

Apple, iPad and iPhone are trademarks of Apple Inc., registered in the U.S. and other countries. App Store is a service mark of Apple Inc.

Android is a trademark of Google Inc.

Dealer's Stamp

Information correct at time of printing. Printed July 2020

**ULTRA-SHORT THROW**  
**INTERACTIVE PROJECTORS**  
**EB-725W/725Wi/735F/735Fi**

**EPSON**  
EXCEED YOUR VISION

**AFFORDABLE**  
**YET POWERFUL**  
**VIRTUAL**  
**WHITEBOARD.**



Instil wonders into your presentations with Epson EB-700 series projectors' Full HD laser display\*! Bring learning experiences to life through clearer, cleaner, and more powerful images with the new Full HD display\*. Strengthen your presentations with crisp messages and engage your audience through the interactive digital whiteboard. Designed for both meeting spaces and educational purposes, you can now draw, print, save, and even email without a computer.

- Full HD<sup>1</sup> Resolution
- Advanced Whiteboard Function<sup>2</sup>
- Finger Touch Interactive<sup>3</sup>
- Ultra-short Throw 100" (16:10)
- 20,000<sup>4</sup> Light Hours
- Multi-PC Projection



**IT'S IN THE DETAILS.**  
 3LCD technology that delivers quality projected images and reliable performance.

\* For EB-735F and EB-735Fi only.  
<sup>1</sup> For EB-735Fi and EB-725Wi models.  
<sup>2</sup> Optional for EB-735Fi and EB-725Wi only.  
<sup>3</sup> Pixel shifting technology achieves Full HD resolution on screen.  
<sup>4</sup> Approximate time until brightness decreases 50% from first usage. Measured by acceleration test assuming use of 0.04 - 0.20 mg/m<sup>3</sup> of particulate matter. Time varies depending on usage conditions and environments.  
<sup>5</sup> Color brightness(color light output) in brightest mode, measured by a third-party lab in accordance with IDMS 15.4. Color brightness will vary depending on usage conditions. Top-selling Epson 3LCD projectors versus top-selling 1-chip DLP projectors based on NPD sales data for May 2017 - April 2018.

# Crystal clear presentation in Full-HD

Integrating a projector, whiteboard, and interactive display into one, the Epson EB-700 series is truly the master of collaborative devices. Transforming flat surfaces into an interactive virtual space to enhance the learning experience, the EB-700 series allows users to write and present without any additional software or computer.



### Full HD Resolution\*

Immerse in a dynamic viewing experience with Full-HD resolution (1080p). Get your message across with clearer images.

\*For EB-735/735Fi (FullHD).



### Ultra Bright Image Quality

An impressive colour/white brightness<sup>1</sup> of up to 4,000 lumens with laser light source.



### Lower Maintenance Cost

Maintenance free Laser Light Source with up to 20,000 light hours<sup>2</sup>.



### Wireless Integration

Wireless connectivity with Wi-Fi and Miracast support.



### Epson Projector Management

Manage multiple projectors from a remote site with one device using the Epson Projector Management software.



### Connectivity with Peripheral

Connect to the Epson document camera and control it directly from the screen. Bring lessons alive right before your students' eyes.



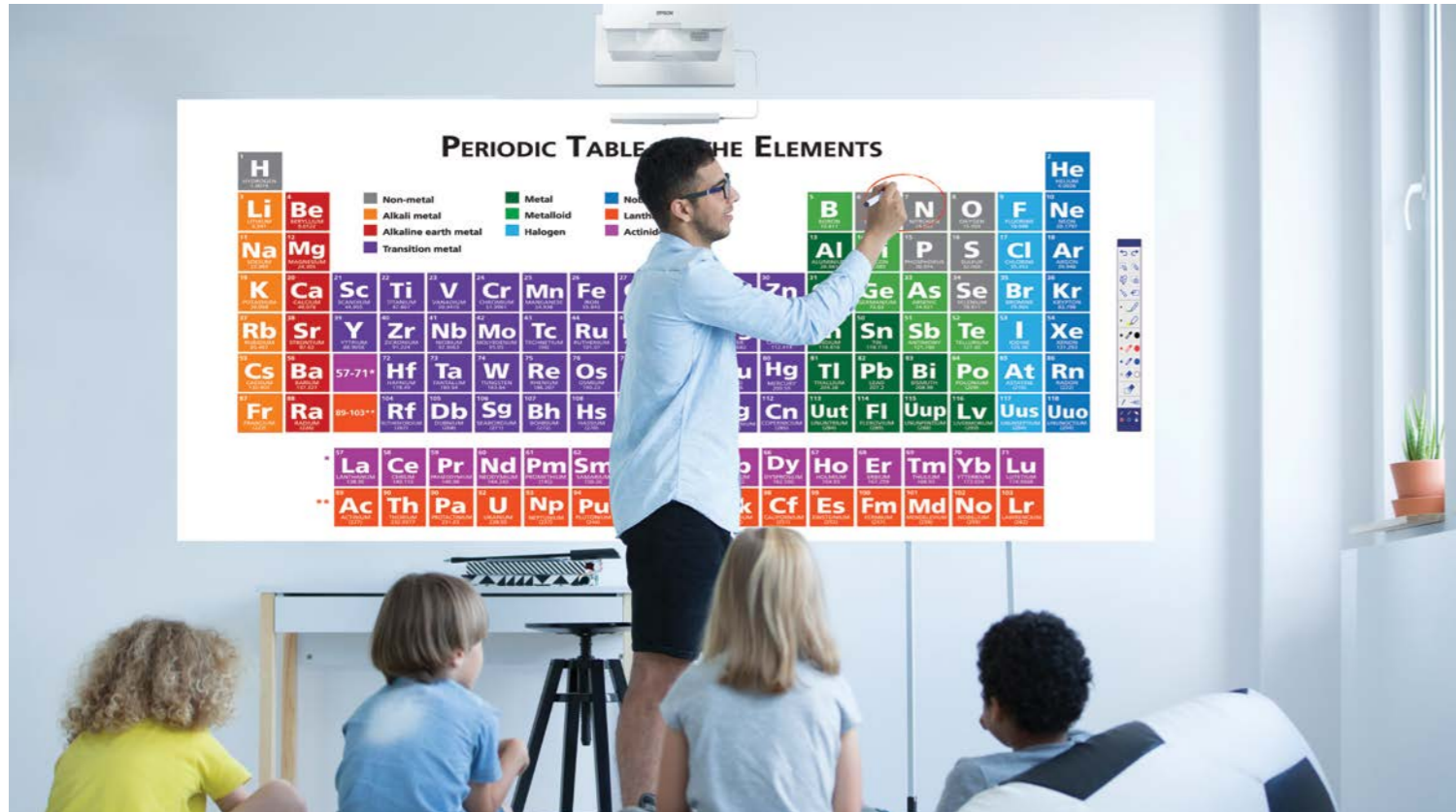
### Express more ideas in one big screen

Enhance the learning experience and make your lessons more memorable, engaging, and fun. Share more ideas and make learning a two-way street with the Epson EB-700 series.

<sup>1</sup> Color brightness (color light output) and white brightness (white light output) will vary depending on usage conditions. Color light output measured in accordance with IDMS 15.4; white light output measured in accordance with ISO 21118.

<sup>2</sup> Approximate time until brightness decreases 50% from first usage. Measured by acceleration test assuming use of 0.04 - 0.20 mg/m<sup>3</sup> of particulate matter. Time varies depending on usage conditions and environments.

# Leading the change towards classrooms of tomorrow.



Enhancing learning experiences in classrooms with a giant, interactive, and immersive digital drawing board instead of the traditional whiteboard will no longer be just a dream. Operating by either an optional six-point multi-touch or two interactive pens, the Epson EB-700 series allows users to create drawings, and share information onto other devices instantly. The PC-less interactivity equips educators and students the direct control of information shown and shared on the crisp Full-HD\* laser display.

When given the opportunity to co-create and interact simultaneously with the students, educators are able to strengthen their messages, bringing forth lessons that are enriching, stimulating, informative, and fun.

\* For selected models only.



## Digital Whiteboard Capability

Enjoy up to 20 pages of digital whiteboard even with no PC connected.



## Advanced Whiteboard Function\*

Save whiteboard images in PNG, JPEG, PDF, and editable EWF2 files directly into a USB storage, a PC via USB-B cable or via the network.



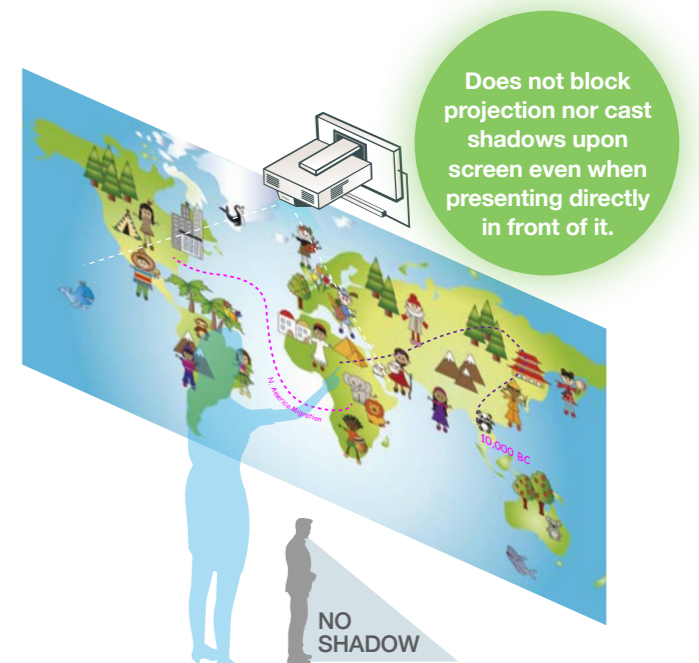
## Ultra Wide Display

The new 16:9\*\* display allows maximization of the existing whiteboard, providing an ultra-wide display of 100 inches diagonal.



## Ultra-Short Throw

Teachers and students will no longer be blinded by projection while presenting, and no shadows will be cast on the screen.



\*For EB-735Fi and EB-725Wi models only.

\*For EB-735Fi and EB-725Wi models only.

\*\*100" diagonal for EB-735Fi.  
EB-735F can go up to 120" diagonal at 16:9.

## Advanced Whiteboard Function EB-735Fi and EB-725Wi models only

Using Epson EB-735Fi and EB-725Wi projectors, saving whiteboard files is made convenient and hassle-free with the Advanced Whiteboard Function. Whiteboard images can be exported in a variety of formats including PNG, JPEG, PDF, and editable EWF2, directly into a USB storage, a PC via USB-B cable or via the network.

**Without Advanced Whiteboard Function**

EB-695Wi series

**USB Storage only**

Some schools and companies prohibit the use of USB storage due to security reasons.

**With Advanced Whiteboard Function**

EB-700 interactive series

- UPGRADED **USB Storage**
- UPGRADED **PC via USB-B Cable**
- UPGRADED **Network**  
(PNG, JPEG, PDF & editable EWF2 File)

**Benefits of using Advanced Whiteboard Function:**

- Versatile connectivity options
- Save and share editable files with users across the same network

## Superior Image Quality

Enjoy a dynamic viewing experience with Full HD\* resolution on screen with laser light source. Deliver vibrant and sharp high-resolution image displays from PCs, tablets and smartphones and watch your photos, 3D CAD, Blu-ray and online videos come to life in Full HD\*. Data figures on spreadsheets and charts will also be displayed clearly for everyone to read accurately.

\* For EB-735F/735Fi. Pixel shifting technology achieves Full HD resolution on screen.



### Brighter Images

With brighter images of up to 4,000lm, it will allow clear image even in ambient light conditions from fluorescent lamps or sunlight from windows.



### Larger Images

With a wide projection screen size of up to 100 inches 16:9, you enjoy bigger image projection for greater visibility.



### Ultra-short Throw Advantage

As light is not blocked by the presenter, less shadow is formed on the screen, allowing the audience to clearly see the information projected at all times.

# Kickstart highly **engaging and interactive** presentations instantly.



Connecting people through technology, the Epson EB-700 series provides an engaging platform for creative ideas and knowledge exchange without breaking the bank. Regardless of industries and sectors, interactive collaborations can be done clearly, accurately, and efficiently.

Enjoy the freedom to simultaneously share content wirelessly from multiple devices with iProjection. Projecting at 4,000lm, you can now create and present clearer information in meeting rooms of any sizes.



### Laser Light Source

Save more without the need to replace the projector's lamp and a longer maintenance cycle with laser light source.



### Microsoft Ink Support

Draw and write on Microsoft PowerPoint, Excel or Word documents using Microsoft Office Ink.



### Quick Info Sharing

Enjoy great flexibility of importing and sharing information.



### Multi Location Interactivity

Up to 4 interactive projectors in different location can share the interactivity of the projector screen\*\*.

\*\*Applicable only when connected to the same network, for example via VPN.



### Wireless Connectivity

Project from your laptop or mobile wirelessly using Epson iProjection or Miracast Screen Mirroring respectively.





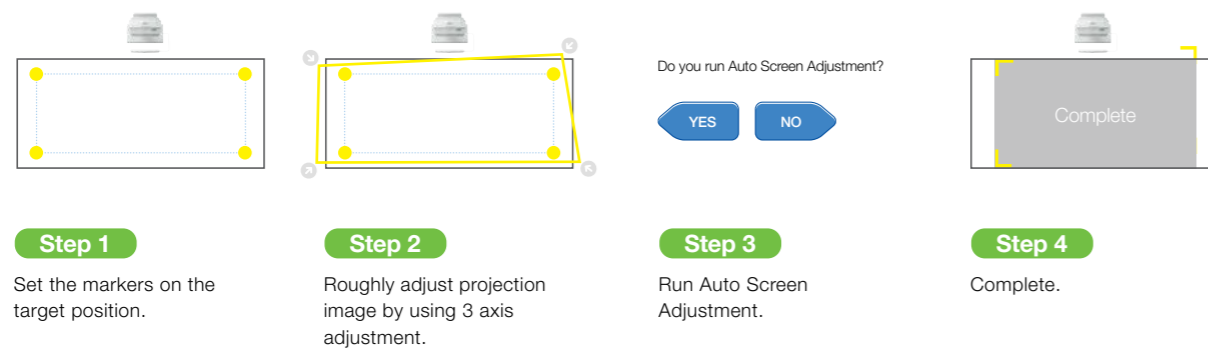
## Easy Installation Guide

Epson EB-700 series new wall mount design makes installation a breeze. Explore the possibilities with the slimmer Finger Touch Unit. You can now calibrate the screen with the simple one-click Auto Adjustment feature.



### 1 Screen adjustment

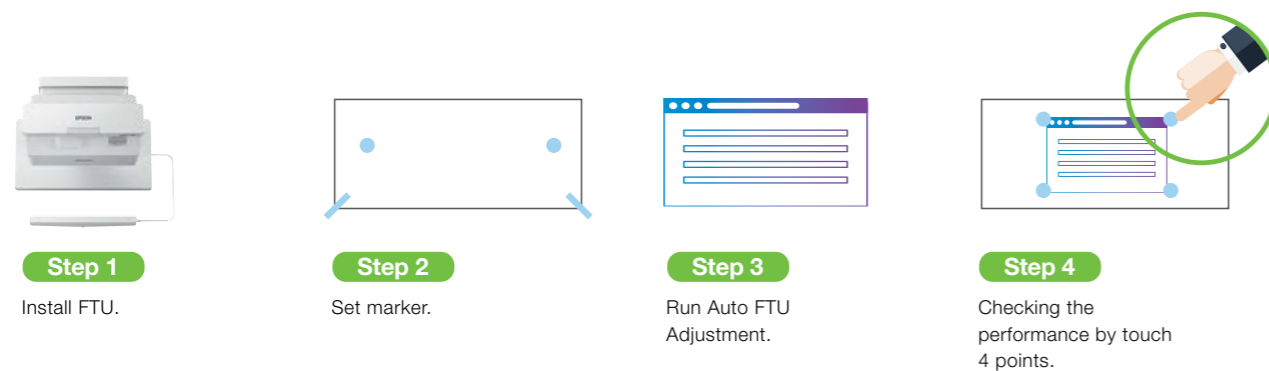
Minimise image adjustment setup time.



\*For EB-725Wi and EB-735Fi models only.

### 2 FTU adjustment

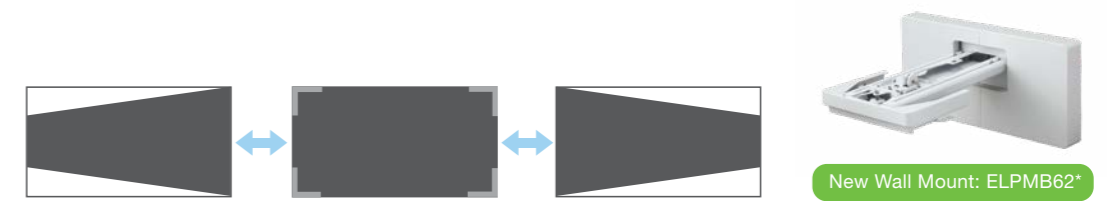
Minimise the installation time.



\*For EB-725Wi and EB-735Fi models only.

### 3 New wall mount

Save on installation time and avoid image vibration with the 3-axis adjustment component.



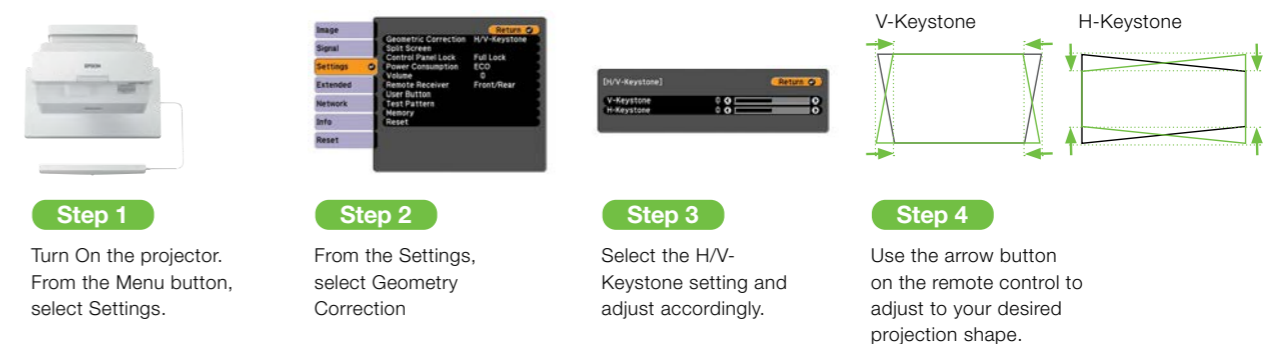
Lock dial to the image stability

Easy adjustment with free angle structure

\*Setting plate ELPMB62 will be only be provided as an optional accessory.

### 4 Geometry Correction

Correct the shape of an image that is unevenly rectangular on the sides with the projector's H/V Keystone setting.



## Wide Range of Connectivity

### Quick information sharing

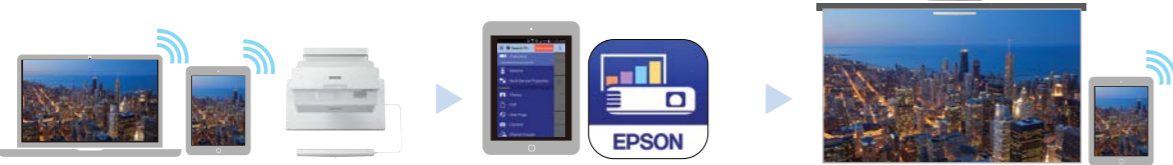
With the rich input-output options provided by the smart interactive projector platform, you can enjoy great flexibility of importing information from various sources and sharing the meeting results in multiple ways, saving you precious time and increasing productivity.



### Project Documents, Photos, and More Wirelessly

Enjoy wireless projection via the Epson iProjection\* app with your Chromebook or mobile devices. This powerful app allows you to share, manage, and annotate on displayed content from an easy-to-use, intuitive menu. iProjection\* for Chromebooks supports fully mirrored display of all of your Chromebook content including Google Docs, Slides, Sheets, and the Chrome browser.

Using the iProjection App is easy:



#### 1 Connect

Connect your PC/mobile device to the projector's wireless network.

#### 2 Launch

Launch the app and select the connected projector.

#### 3 Project

Select the content that you want to project and you're ready to go!

\* In iProjection mode, projector profile search, multi-screen display, distribution function, audio transfer, movie file transfer, and encryption data transfer capabilities are not supported.

## Intuitive User Interface



### Home Screen

View and access your most frequently used functions immediately from the home screen. See all input sources at one glance and switch between them easily. For devices to easily connect wirelessly, the projector's wireless network information and QR code are also shown on the home screen.

### Improved Control Toolbar on the Projector Screen

Conveniently access commonly used functions from the control toolbar projected on screen. Buttons available include Home, Print, Save, Image Share, Input, Zoom, A/V mute, Freeze, Volume, Split Screen, Timer, Document Camera and Power Off.

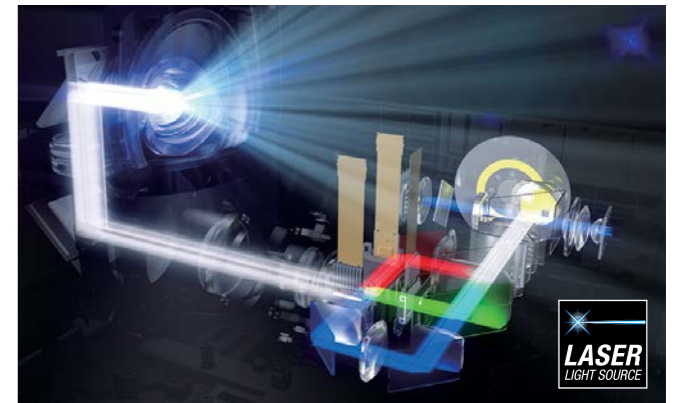
### Upgraded OSD Menu and Home Screen

The new easy-to-use touch-activated home screen and interactive On-Screen Display (OSD) menu make set up and navigating across functions fuss-free and simple.

## Laser Light Technology

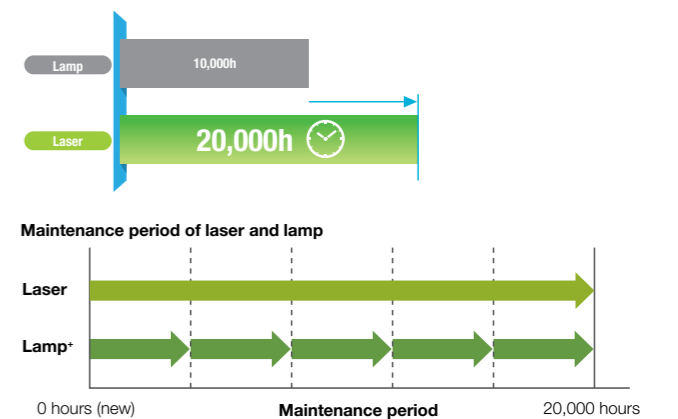
### Revolutionary Laser Light Source

Blue light from the laser is projected through a beam splitter, which divides the light into two beams. One beam is reflected by a phosphor wheel, changing it into yellow, while the other beam remains blue. The two beams are then recombined into white light and separated into red, green and blue through dichroic mirrors. Each of the three colours passes through LCD panels, producing three individual images, which are transmitted through a prism and combined into the final full-colour image.



### Longer Light Hours

Engineered with inorganic LCD panels and an inorganic phosphor wheel, this newly designed laser light source delivers 20,000 hours<sup>^</sup> of maintenance-free use. Cut down on the frequency of lamp replacements, saving you time and money, and lowering the total cost of ownership.



<sup>^</sup> Compared with other conventional lamp projector that has lamp life of 4000 hours.

<sup>^</sup> Approximate time until brightness decreases 50% from first usage. Measured by acceleration test assuming use of 0.04 - 0.20 mg/m<sup>3</sup> of particulate matter. Time varies depending on usage conditions and environments.

**Eco Features**

- Uses just 0.3W of power in standby mode
- Projector optics employ lead-free lenses
- Unpainted plastic housing reduces the environment impact
- The flame retardants used in the plastic housing do not contain chlorine or bromine
- Laser light technology\* eliminates the need for lamp replacements

Better Products for a Better Future™

For more information on Epson's environmental programmes, visit <http://global.epson.com/SR/environment>.



ECO FRIENDLY

# DISPLAY SIZE MATTERS

When you are looking for a bigger display, projection is the obvious answer. With most of Epson projectors being able to project up to 300" - that means a brighter and clearer picture for everyone in the room. Ensuring that your information is conveyed accurately and your audience is captivated by the content that is displayed.

## 4/6/8 Rule

Widely used by audio / visual professionals to determine the appropriate sized displays for classrooms, conference rooms and large venues.

70"

FLAT PANEL DISPLAY

V/S

100"

EPSON PROJECTOR DISPLAY

Analytical Viewing

Detailed Information

Basic Viewing

PPT Presentation

Passive Viewing

Movies and Images Viewing

4X HEIGHT

5m From Screen

6X HEIGHT

7.5m From Screen

8X HEIGHT

10m From Screen

Ratio 16:9



3.5m

5.2m

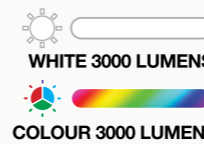
7m



## PROJECTOR WISHES COME TRUE.

EPSON 3LCD PROJECTORS

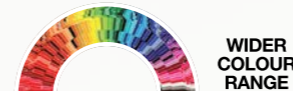
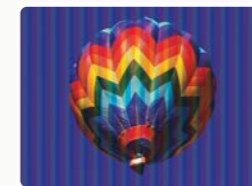
1-CHIP PROJECTORS



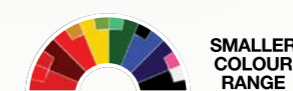
TRUE BRIGHTNESS



TRUE COMFORT



TRUE REALISM



# TRUE COLOURS

Brighter, vivid projection from Epson.

9 out of 10 PEOPLE PREFER IMAGES FROM EPSON PROJECTORS\*



EpsonSEA



EpsonSEA



EpsonSEA



EpsonSoutheastAsia



Epson Southeast Asia

Find out more at [www.epson.com.sg/truocolours](http://www.epson.com.sg/truocolours)



IT'S IN THE DETAILS.

With 3LCD panels, every projection gives you spectacular true colours.

\* Leading Epson business and education projectors vs. leading 1-chip DLP® projectors, selected according to NPD data as of July 2015. Based on U.S. research conducted by Radius Research.

\*\* These lumen statistic can be found at [www.colorlightoutput.com](http://www.colorlightoutput.com).

1 Color brightness(color light output) in brightest mode, measured by a third-party lab in accordance with IDMS 15.4. Color brightness will vary depending on usage conditions. Top-selling Epson 3LCD projectors versus top-selling 1-chip DLP® projectors based on NPD sales data for May 2017 - April 2018.

2 Gamut volume in brightest mode, measured by a third-party lab in 3D in the CIE L\*a\*b\* coordinate space. Top-selling Epson 3LCD projectors versus top-selling 1-chip DLP® projectors based on NPD sales data for May 2017 - April 2018.