

SPECIFICATIONS

MODEL NUMBER	EB-L200F	EB-L200W	EB-L200X	
SKU Number	V11H990052	V11H991052	V11H992052	
Projection Technology	RGB liquid crystal shutter projection system			
Specifications of Main Parts				
LCD	Size	0.62" (C2Fine)	0.59" (C2Fine)	0.63" (C2Fine)
	Resolution	Full HD (1080p)	WXGA (1280 x 800)	XGA (1024 x 768)
	Type	Optical Zoom (Manual) / Focus (Manual)		
	F-Number	1.49 – 1.77	1.51 – 1.99	
	Focal Length	18.2 – 29.2mm		
Projection Lens	Zoom Ratio	1.0 – 1.62 (Optical Zoom)		
	Throw Ratio	1.33 – 2.16	1.38 – 2.24	
Light Source				
Type	Laser Diode			
	Life (Normal / Quiet / Extended)	20,000 / 20,000 / 30,000 hrs		
Screen Size (Projected Distance)				
Brightness*	Standard: 60" screen @ 172cm	Standard: 60" screen @ 179cm	Standard: 60" screen @ 169cm	
	Zoom (Wide): 40" to 500" screen (114 – 1,461cm)	Zoom (Wide): 29" to 282" screen (85 – 851cm)	Zoom (Wide): 30" to 300" screen (83 – 854cm)	
White Light Output (Normal / Eco)	4,500lm / 3,150lm	4,200lm / 2,940lm		
Colour Light Output	4,500lm	4,200lm		
Contrast Ratio	Over 2,500,000 : 1			
Internal Speaker(s)				
Sound Output	16W Monoaural			
Geometric Correction				
Vertical / Horizontal Keystone	±30° / ±30°			
Quick Corner	Yes (Manual)			
Image				
Dynamic Contrast	Yes			
Noise Reduction	Yes			
Super-Resolution	Yes			
Detail Enhancement	Yes			
Connectivity				
Analog Input	D-Sub 15Pin	2 (RGB)		
	Composite	RCA x 1 (Yellow)		
Digital Input	HDMI	2 (HDCP 2.2)		
Analog Output Terminal	D-Sub 15Pin	1 (Black) (in common with Computer 2)		
Audio Input	RCA	2 (White, Red)		
	Stereo Mini Jack	2		
Audio Output	Stereo Mini Jack	1		
Others	USB Type A	1 (for Saving and Reading Data via USB, Firmware Update, Copy OSD Settings, Document Camera)		
	USB Type B	1 (for Firmware Update, Copy OSD Settings)		
Control I/O	Mic I/O	Stereo Mini x 1		
Network	RS-232C	D-Sub 9pin x 1		
	Wired LAN	RJ45 x 1 (100Mbps)		
	Wireless	Built-in* (USB Type A x 1 using Optional ELPAP11 wireless unit)		
Wireless Specification				
(Wireless LAN and Screen Mirroring)				
Supported Speed For Each Mode	Infrastructure: IEEE 802.11b (2.4GHz): 11Mbps ³ , IEEE 802.11g (2.4GHz): 54Mbps ³ , IEEE 802.11n (2.4GHz): 72.2Mbps ³ , IEEE 802.11a (5GHz): 54Mbps ³ , IEEE 802.11n (5GHz): 150Mbps ³ , IEEE 802.11ac (5GHz): 325Mbps ³ Access Point (Wi-Fi Direct): IEEE 802.11g (2.4GHz): 54Mbps ³ , IEEE 802.11n (2.4GHz): 72.2Mbps ³ , IEEE 802.11a (5GHz): 54Mbps ³ , IEEE 802.11n (5GHz): 150Mbps ³ , IEEE 802.11ac (5GHz): 325Mbps ³ Infrastructure, Access Point (Wi-Fi Direct)			
Supported Mode	Infrastructure: OPEN, WPA2 / WPA3-PSK, WPA2 / WPA3-EAP			
Wireless LAN Security	Supported EAP Type: PEAP, PEAP-TLS, EAP-TLS, EAP-FAST ; Access Point (Wi-Fi Direct): WPA2-PSK (AES)			
Operating Temperature⁴				
Single Use	0 - 2,286 m (0 - 7,500 ft); 0 °C - 40 °C [32 °F - 104 °F] ; 20% to 80% Humidity, No Condensation Over 2,286 m (7,500 ft); 0 - 35 °C [32 °F - 95 °F] ; 20%-80% Humidity, No Condensation			
Multi-projection Use	0 - 2,286 m (0 - 7,500 ft); 0 °C - 35 °C [32 °F - 95 °F] ; 20% to 80% Humidity, No Condensation Over 2,286 m (7,500 ft); 0 - 30 °C [32 °F - 86 °F] ; 20%-80% Humidity, No Condensation			
Operating Altitude				
Direct Power On / Off	Yes			
Start-Up Period	Less than 8 seconds, Warm-up Period: 30 seconds			
Quick Start-Up	Less than 5 seconds (Display)			
Cool Down Period	Instant Off			
Air Filter	Type	Electrostatic Filter		
	Maintenance Cycle ⁵	20,000 hours		
Power Supply Voltage	100 – 240 V AC ±10%, 50/60 Hz			
Power Consumption (220 - 240V)				
Lamp On (Normal / Eco)	254W / 193W			
Standby (Network On / Off)	2.0W / 0.5W			
Dimension Excluding Feet (D x W x H)	299 x 325 x 90 mm			
Weight (with cable cover)	Approx. 4.1kg			
Fan Noise (Normal / Eco)	36dB / 27dB			

* Pixel shifting technology achieves Full HD resolution on screen.

¹ Colour brightness (colour light output) and white brightness (white light output) will vary depending on usage conditions. Colour light output measured in accordance with IDMS 15:4; white light output measured in accordance with ISO 21118.

² With the built-in wireless mode, users can connect the device directly to the projector while with the additional ELPAP11, it is possible to connect the device not only directly to the projector but as well as via a network infrastructure.

³ Maximum speed and range is achievable when used with same enhanced mode technology. Actual data rates, features and performance may vary depending on your computer system, the environment and other factors.

⁴ When environmental temperature becomes high, the brightness becomes dark automatically.

⁵ When used in the general office environment (the amount of floating dust: 0.04 - 0.2 mg/m³). Based on the Epson's in-house test results.

Supplied Accessories

Power Cable: 1.8m x 1
HDMI Cable (1.8m)
Remote Control with 2xAAA Battery

Optional Accessories

Air Filter:ELPAF60
USB Extension Cable: ELPKC31
Ceiling Mount: ELPMB23
Ceiling Mount (New):
ELPMB60 (White), ELPMB60W (White),
ELPMB60B (Black), ELPMB61 (White),
ELPMB61W (White), ELPMB61B (Black)
Wireless LAN unit: ELPAP11
Soft Carry Case: ELPKS71

EB-L200F/L200W/L200X



©2020 Epson Singapore Pte Ltd. All Rights Reserved. Reproduction in part or in whole, without the written permission from Epson, is strictly prohibited.

EPSON and EXCEED YOUR VISION are registered trademarks of Seiko Epson Corporation.

All other product names and other company names used herein are for identification purposes only and are the trademarks or registered trademarks of their respective owners.

Epson disclaims any and all rights in those marks. Projected images shown herein are simulations. The actual product design and contents may vary. Specifications are subject to change without notice and may vary between countries. Please check with local Epson offices for more information.

Apple, iPad and iPhone are trademarks of Apple Inc., registered in the U.S. and other countries. App Store is a service mark of Apple Inc.

Android is a trademark of Google Inc.

Dealer's Stamp

Information correct at time of printing.
Printed October 2020

BUSINESS LASER PROJECTORS EB-L200F/L200W/L200X

FULL-HD* CLARITY & POWER-PACKED FUNCTIONS.



Bringing a game-changer to the tables with Epson EB-L200 series of projectors.

Get ready to triumph with persuasive and vivid projections during conferences and lessons. Optimised for education institutions and corporate sectors, amplify your messages with the crisply detailed Full-HD* display. The EB-L200 series is power-packed with up to 20,000[^] maintenance-free laser light source hours and built-in wireless integration for ease of use.



IT'S IN THE DETAILS.

Superior Image Quality

A dynamic Full-HD* viewing experience, delivering vibrant and sharp images up to 4,500 lumens with the laser light source.

Ease of Connectivity

Connect easily with built-in wireless connectivity and high portability to facilitate move between classrooms and meeting rooms.

Peace-of-mind Reliability

Highly reliable projectors delivering up to 20,000 hours of maintenance-free laser light source.

Find out more at www.epson.com.sg/projectors



Epson Singapore Pte Ltd
Epson Customer Care Center
438B Alexandra Road, Block B Alexandra Technopark, #04-01/04, Singapore 119968. Tel: (65) 6596-5500
100G Pasir Panjang Road, #01-09 Interlock Centre, Singapore 118523. Epson Helpdesk: 800 120 5564. Opening hours: Monday - Friday, 9am to 5pm.
Closed on Saturday, Sunday and Public Holiday. Please refer to www.epson.com.sg/contact for updated opening hours.

* For EB-L200F only. Pixel shifting technology achieves Full HD resolution on screen.

[^] Approximate time until brightness decreases 50% from first usage. Measured by acceleration test assuming use of 0.04 - 0.20 mg/m³ of particulate matter. Time varies depending on usage conditions and environments.



A world of difference with visual brilliance



Impressively consistent with sharp and bright projections, performance-focused functions – up to Full-HD Display*, generous light output, massive screen capability and built-in connectivity functions, with steadfast reliability.



“ Surpassing expectations for classrooms and office projectors. ”



Up to Full-HD Resolution*

Bedazzle your audience with bright, dynamic, and engaging content with the Full-HD resolution* (1080p).



Bright Image Quality

Laser light source produces up to 4,500 lumens of spectacular colour/white brightness.



Lasting Reliability

Present with confidence with 20,000 hours² of maintenance-free laser light source.



Wireless Integration

Ease of connection with built-in wireless connectivity through Wi-Fi and Miracast support.



Compact and Flexible

Lightweight and portable, it is easy to carry³ between classrooms and meeting rooms wherever needed.



Screen Size Flexibility

Up to 1.6X optical zoom provides the flexibility to adjust the projector screen size while maintaining its quality.

* For EB-L200F only, Pixel shifting technology achieves Full HD resolution on screen. Resolution for EB-L200W is WXGA, EB-L200X is XGA.

¹ Color brightness (color light output) and white brightness (white light output) will vary depending on usage conditions. Color light output measured in accordance with IDMS 15.4; white light output measured in accordance with ISO 21118.

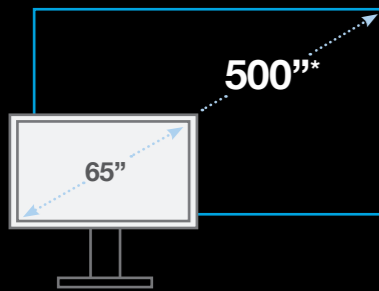
² Approximate time until brightness decreases 50% from first usage. Measured by acceleration test assuming use of 0.04 - 0.20 mg/m³ of particulate matter. Time varies depending on usage conditions and environments.

³ Carry case is sold separately.

Connect and inspire every learning experience.

Upgrade your classrooms today with the Epson EB-L200 series! Eliminate lesson interruptions with long-lasting laser light source, producing richer projections that ensure clarity no matter where students are seated.

“ Lesson contents can now be shared efficiently, enabling lessons to be more fruitful and memorable. ”



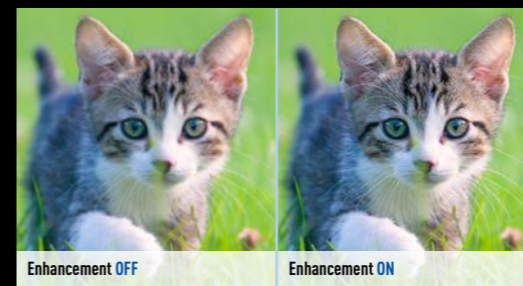
Crisp and Immerisve

Students seated anywhere in the classroom can view lessons clearly thanks to the flexible display sizes, up to 500 inches*, on any surface.



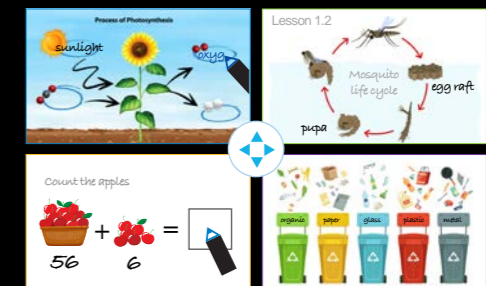
Remarkable Contrast Ratio

With the astounding 2,500,000:1 dynamic contrast ratio, lessons can be communicated in richer and bolder images.



Super Resolution with Image Enhancement

Improve perceived image resolution with the detail enhancement function. Now, you can enjoy better image quality.



Split Screen Function

A split screen function enables the simultaneous projection of up to four images from separate devices through both wired and wireless connections on a single screen.

Superior Image Quality

Enjoy a dynamic viewing experience with Full-HD* resolution on-screen coupled with laser light source. Deliver vibrant and high-resolution image displays from your devices.

* For EB-L200F. Pixel shifting technology achieves Full HD resolution on screen.

How can a projector with better resolution aid your presentation?

Epson Business Projectors

Resolution:

EB-L200F Full-HD (1080p)	EB-L200W WXGA (1280 x 800)	EB-L200X XGA (1024 x 768)
-----------------------------	-------------------------------	------------------------------

- ✓ Sharper text and vivid images
- ✓ Includes more information on the screen
- ✓ Better audience engagement

Other SVGA Projectors

Resolution:

Other Projectors SVGA (800 x 600)

- ✗ Blurry images with less legible text
- ✗ Less information allowed on the screen
- ✗ Dull and challenging viewing experience

Epson projector gives you:



Brighter Images

With brighter images of up to 4,500lm, it will allow clear image even in ambient light conditions from fluorescent lamps or sunlight from windows.



Larger Images

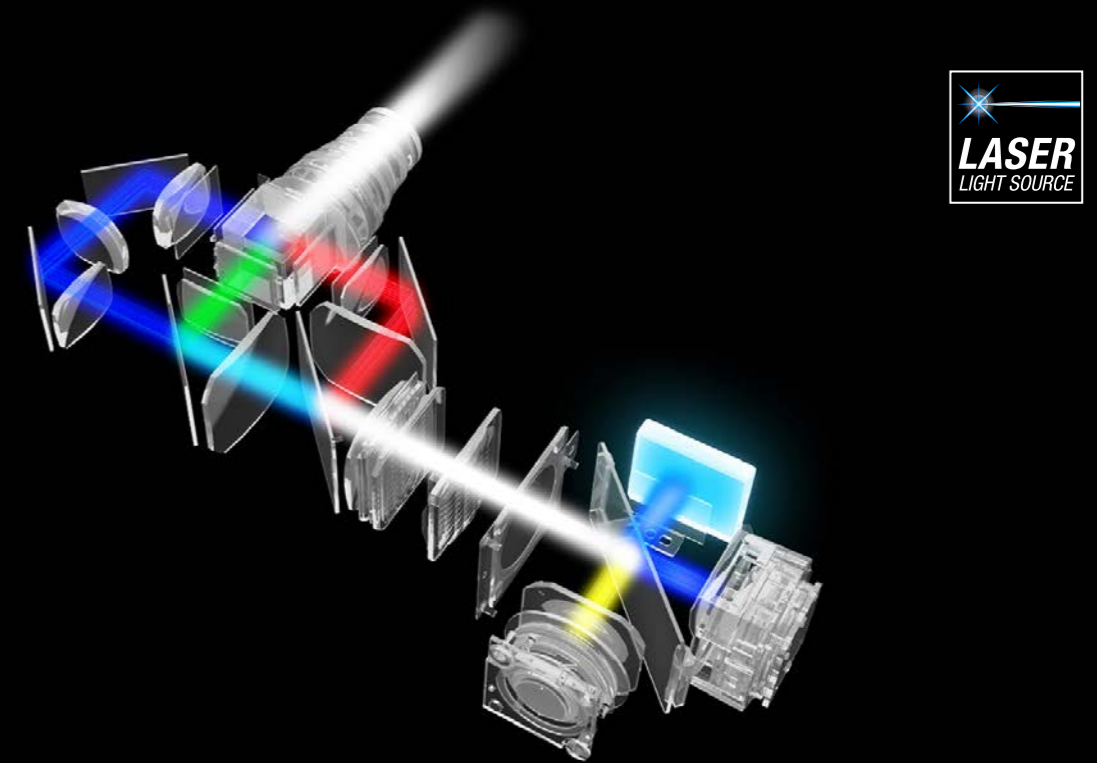
With a wide projection screen size of up to 500 inches*, you enjoy bigger image projection for greater visibility.

* For EB-L200F.

Laser Light Technology

Bright and Compact

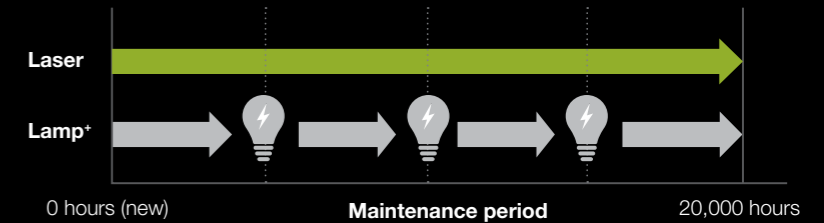
Using Epson's very own original designed fixed phosphor unit, coupled with the innovative optimized design, the L200 series is now more compact yet producing brighter and sharper images. Thanks to the new heatsink design, the L200 series has better heat conductivity, resulting in improved heat resistance, all while delivering high-quality vivid images.



Cost Effective

Epson's unique laser technology sees the L200 series having 20,000 hours* of maintenance-free laser light source. Enjoy peace of mind when using these highly reliable laser projectors thanks to the innovative fixed phosphor unit, giving your devices durability and long-lasting life.

Maintenance period of laser and lamp



* Compared with other conventional lamp projector that has lamp life of 5,000 hours.
 ^ Approximate time until brightness decreases 50% from first usage. Measured by acceleration test assuming use of 0.04 - 0.20 mg/m3 of particulate matter. Time varies depending on usage conditions and environments.

- Eco Features**
- Uses just 0.5W of power in standby mode
 - Projector optics employ lead-free lenses
 - Unpainted plastic housing reduces the environment impact
 - The flame retardants used in the plastic housing do not contain chlorine or bromine
 - Laser light technology eliminates the need for lamp replacements

Better Products for a Better Future™

For more information on Epson's environmental programmes, visit <http://global.epson.com/SR/environment>.



ECO FRIENDLY

Hassle-free meeting and collaborations from anywhere

Present persuasive and influential content in an engaging environment for ideas and knowledge exchange with the new Epson EB-L200 series. Conferences are made accessible and convenient using the split-screen capability integrated connectivity with Wi-Fi and Miracast support.

“ Information can now be shared in sharp and brilliant colours in meeting rooms of all sizes. ”

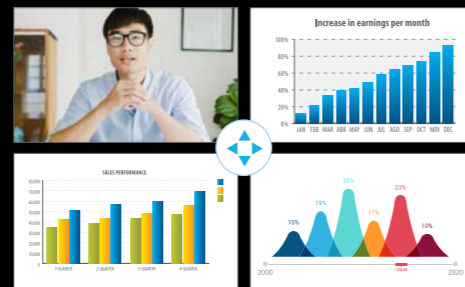


Split Screen Function



Built-in Connectivity

Project directly from your smart devices with built-in Wi-Fi and Miracast functions without installing extra drivers.



Split Screen Function

Power up efficiency in conferences by connecting up to four displays in one screen and accommodate better information sharing.



Quick Startup Time

Be up and running in no time, start your presentations and conferences immediately with the 5-sec quick startup time.



Flexible Placement

Space is no longer a constrain with the new Epson EB-L200 series. Compatible with the previous ELPMB23 ceiling mount and the newer optional mounts, the projector can also be placed on any surface, including a table just in front of your screen. Enjoy large and sharp images even in tight spaces in classrooms and meeting rooms.



Flexible Connectivity



Knowledge Sharing



Engaging Presentation



Immersive Communication



Wide Range of Connectivity

Project Documents, Photos, and More Wirelessly

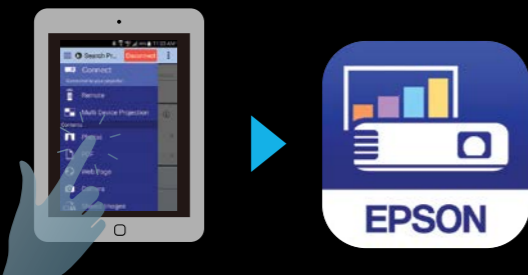
Enjoy wireless projection via the Epson iProjection* app with your PC (Windows or Chromebook) or mobile devices. This powerful app allows you to share, manage, and annotate on displayed content from an easy-to-use, intuitive menu.

Using the iProjection App is easy:

1 Connect
Connect your PC/mobile device to the projector's wireless network.



2 Launch
Launch the app and select the connected projector.



3 Project
Select the content that you want to project and you're ready to go!



Intuitive User Interface

Home Screen

View and access your most frequently used functions immediately from the home screen. See all input sources at one glance and switch between them easily. For a faster and easier wireless connection, the projector's wireless network information and QR code are shown on the home screen too.



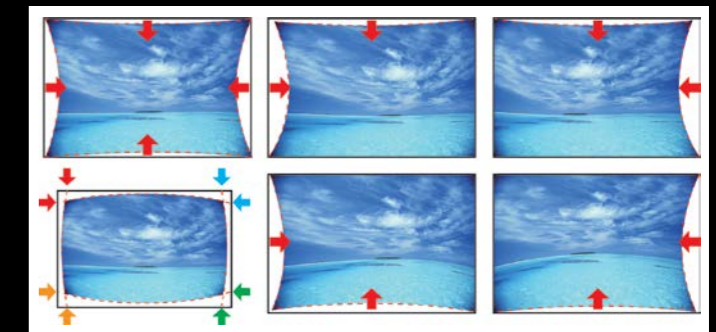
Compact and Portable

The sleek and lightweight Epson EB-L200 series make it easy and convenient to reallocate them in different classrooms and meeting rooms.



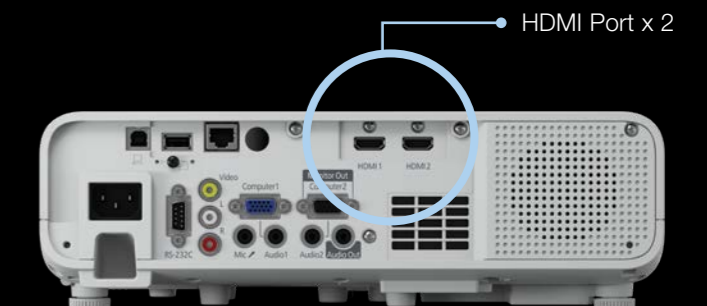
Arc Correction

Quickly and easily correct any vertical or horizontal distortion of the projected image on large screens.



Plug-and-play with HDMI

Convenient and accessible, the Epson EB-L200 series come equipped with up to 2 HDMI ports compatible with HDCP 2.2 connection.



* In iProjection mode, projector profile search, multi-screen display, distribution function, audio transfer, movie file transfer, and encryption data transfer capabilities are not supported.

ULTRA LONG-LIFE.



Epson laser projectors. Enjoy up to 6.5 times the lifespan of a lamp.

When it comes to lasting performance and reliability, laser is lightyears ahead. With no lamp to replace, Epson laser projectors can operate for up to 20,000 hours with minimal maintenance. Combined with improved energy efficiency, this reduces the cost of ownership too, giving you dependable big-screen presentation without big budget demands.

See the range and make the change at epson.com.sg/laser-projectors



Scan the QR code to find out more



IT'S IN THE DETAILS.

EPSON
EXCEED YOUR VISION

EPSON
EXCEED YOUR VISION

PROJECTOR WISHES COME TRUE.

EPSON 3LCD PROJECTORS

1-CHIP PROJECTORS



Up to **3x**
Brighter
Colours
with
Epson® Projectors*

**TRUE
BRIGHTNESS**



WHITE 3000 LUMENS



COLOUR 3000 LUMENS



WHITE 3000 LUMENS



COLOUR 430 LUMENS**



**NO
RAINBOW
EFFECT**

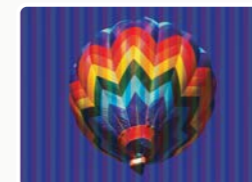
**TRUE
COMFORT**



LIGHT
SOURCE



PRISM



LIGHT
SOURCE



ROTATING
COLOUR
WHEEL

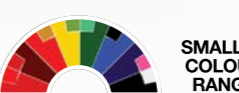


Up to **3x**
WIDER
COLOUR
GAMUT*
Epson Projectors

**TRUE
REALISM**



WIDER
COLOUR
RANGE

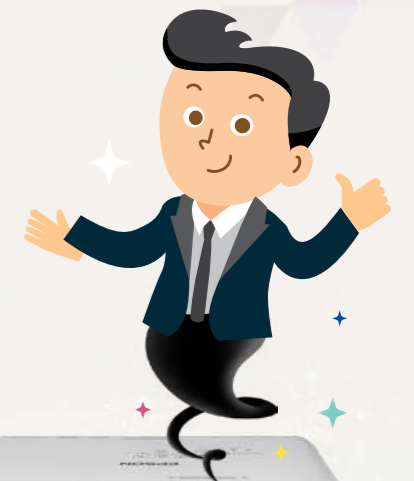


SMALLER
COLOUR
RANGE

**TRUE
COLOURS**

Brighter, vivid projection from Epson.

9 out of 10
PEOPLE
PREFER
IMAGES FROM
EPSON
PROJECTORS*



IT'S IN THE DETAILS.

With 3LCD panels, every projection gives you spectacular true colours.



Find out more at www.epson.com.sg/truecolours

* Leading Epson business and education projectors vs. leading 1-chip DLP® projectors, selected according to NPD data as of July 2015. Based on U.S. research conducted by Radius Research.

** These lumen statistic can be found at www.colorlightoutput.com.

1 Color brightness (color light output) in brightest mode, measured by a third-party lab in accordance with IDMS 15.4. Color brightness will vary depending on usage conditions. Top-selling Epson 3LCD projectors versus top-selling 1-chip DLP® projectors based on NPD sales data for May 2017 – April 2018.

2 Gamut volume in brightest mode, measured by a third-party lab in 3D in the CIE L*a*b* coordinate space. Top-selling Epson 3LCD projectors versus top-selling 1-chip DLP® projectors based on NPD sales data for May 2017 – April 2018.