

# DEBUNKING THE MYTHS ABOUT HOME PROJECTORS

MYTH 1

**A television is just as good as a projector.**

There is less strain on your eyes viewing content from a projector screen, as compared to a television screen, due to a gentler light reflection. You also have the flexibility of having a big screen experience of up to 500-inches in the comfort of your home.

TRUTH



MYTH 4

**I need a blank wall.**

You could easily purchase a pull-down screen or a portable screen that can be kept away when it is not in use.

TRUTH



MYTH 2

**Projectors and its maintenance are expensive.**

Depending on your needs, you can choose between laser or lamp projectors, and before you know it, you have your money back from saving all those trips to the cinema with our wallet-friendly home projectors! Also, expensive lamp replacements are a thing of the past. With laser projectors' 20,000 maintenance free hours\*, you can indulge in 5-hour movie marathons daily for up to 10 years!

TRUTH

Laser Projectors Have

20000

Maintenance Free Hours\*

\*For selected models only.

MYTH 5

**A dark room is needed.**

Thanks to our 3LCD technology, projected contents from Epson home projectors remain brilliant even when viewed in well-lit areas, with equal white and colour brightness of up to 4,000 lumens and high brightness contrast ratio over 2,500,000:1.

TRUTH



MYTH 3

**A projection screen is too big for your home?**

You can easily adjust the screen size from 60-inches to 100-inches, by shifting your home projectors at a distance of 0.26m to 3m^ from the wall.

TRUTH

^Throw distance range is an estimate and will vary depending on model.



MYTH 6

**Troublesome installation.**

Simply turn on the power and be entertained instantly by the inbuilt smart streaming function\* of your projector.

TRUTH

\*For selected models only.



HOME ENTERTAINMENT PROJECTORS

EPSON

androidtv



Fulfil your desire for a spectacular cinematic experience right at home with Epson.

Complete your home entertainment setup and indulge in your favourite shows with Epson's home entertainment projectors. With 4K resolution<sup>1</sup>, maintenance-free laser light source<sup>2</sup>, and gentler light reflection, you can now host movie nights or simply binge-watch your favourite shows with absolute joy and ease.



**Exceptional Image Quality**

Watch as every scene come alive at stunning true-to-life quality, lit up in vivid colours.

**Smart Media Player Function**

Explore a world of unlimited entertainment with Android TV™ and Chromecast built-in™ functions.

**All-in-One Entertainment**

Experience the perfect balance of visual and sound, encapsulated in a compact and stylish design.

<sup>1</sup> Selected models only. 4K Enhancement Technology shifts each pixel diagonally to double Full HD resolution. Resolution is Full HD in 3D Mode.  
<sup>2</sup> No maintenance for the laser light source required for up to 20,000 hours. Approximate time until brightness decreases 50% from first usage. Measured by acceleration test assuming use of 0.04-0.20 mg/m3 of particulate matter. Time varies depending on usage conditions and environment. Replacement of parts other than the light source may be required in a shorter period.  
 \* Google, Google Play, YouTube, Android TV and other marks are trademarks of Google LLC. Google Assistant is not available in certain languages and countries. Availability of services varies by country and language.



## High definition Stunning image quality

It is no longer impossible to recreate that cinematic adventure in your own home with Epson's range of home projectors. Enjoy a truly captivating, detail-packed experience right from the comfort of your couch.



## Plug-and-play Fuss-free set up

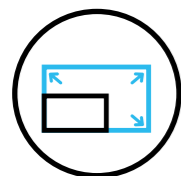
All you need is to plug in the power and your entertainment begins. Home entertainment is made more accessible and fuss-free with Epson's home projectors, which come ready with Android TV™\* function.

\*Selected models only.

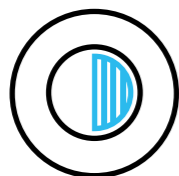


## Truly flexible Project wherever you are

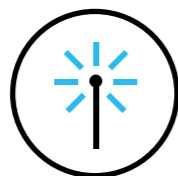
Our stylish and compact home entertainment projectors are designed with the aim to blend in with the aesthetics of your room easily. With flexible screen sizes and keystone correction functions, you can now place the projector anywhere in your living room and still enjoy a perfect vivid projection.



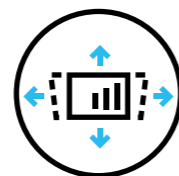
Flexible Screen Size



High Contrast Ratio



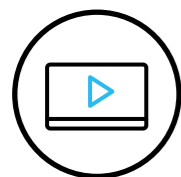
Laser Light Source\*



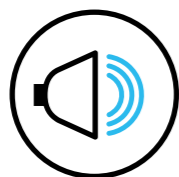
Lens Shift\*



High Dynamic Range (HDR)\*



Inbuilt Smart Streaming Function\*



Built-in Speaker\*



Horizontal Keystone Adjuster\*



Fuss Free set up



Smart Wireless Connectivity\*

\*Applies to selected models only.



## Up close and personal

Bringing the actions closer to you with a bigger viewing screen, you can also stream to your heart's content with Android TV™\* now. Indulge in high contrast videos that bring forth a vivid viewing experience – enjoy your favourite shows without compromising on its quality wherever you are.

## Lightweight and Portable

As light as 1.2kg<sup>1</sup>, you now have the flexibility and convenience to bring the projector around the house, set it up at any corner of your living space, and start watching the latest shows with your family and friends.

## Get Connected Virtually

Simply start up your projector and begin video conferencing with no additional fuss. Conduct virtual calls with your colleagues, friends and family by simply connecting your USB webcams<sup>2</sup>.



CO-FH01



CO-FH02

### EpiqVision Mini



EF-11



EF-12



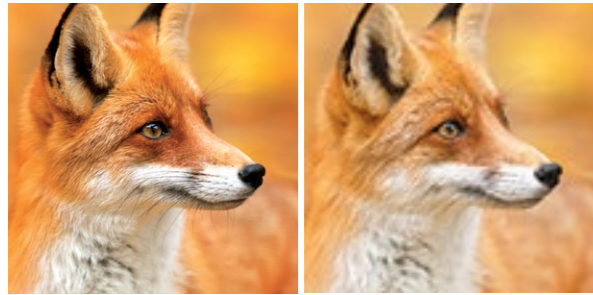
\*Selected models only.

<sup>1</sup> Weight reference for EpiqVision Mini EF-11. <sup>2</sup> For EpiqVision Mini EF-12 only. Check compatible webcam listing on Epson website.

## Brilliant and Sharp HDR10-Compatible

Except CO-FH01/FH02 and EF-11

Compatible with High Dynamic Range content, revel in crisp, detailed, and realistic images with enhanced details on your Epson Ultra Lifestyle projectors. Now you can enjoy an optimal viewing experience with prime picture quality for all your favorite shows.



With HDR Function

Without HDR Function

## Cinematic Sound Experience with Built-in Yamaha Speaker

EpiqVision Mini EF-12 Only

Party as if you are there in person! Immerse in rich audio with the built-in Yamaha speaker, or use it as a standalone bluetooth speaker for your music while you chill.



sound by **YAMAHA**

Get more done with voice control on **androidtv**



Explore a plethora of entertainment possibilities with the Android TV™ and Chromecast built-in™. With the intuitive integrated UI and Voice Control function\*, you can now do more with Google Assistant. Simply connect to the Wi-Fi and your favourite content is just a voice command away.

### Unlimited entertainment

Start a new drama, binge-watch your favourite movies, or stream the latest hits simply with a voice command.

### Wealth of information

Learn more about the shows you are watching. Ask about your favourite movies, actors, or even get the latest scoring status for your favourite teams.

### Plan your day

Manage your calendar, flight information, daily commute and more with your smart projector.

Chromecast built-in



\*Google, Google Home, Chromecast Built-in, Android TV and other related marks and logos are trademarks of Google LLC. Chromecast is available for iOS or Android devices, Mac or Windows computer or Chromebook. Available for selected model. Voice control is applicable to Android TV only.

## Vibrant, Dynamic and High-Performing.

THE PERFECT COMPANION FOR WORK & PLAY

### CO-FH02



POWERED BY  
**androidtv**

RESOLUTION **Full HD 1080p** | SUPPORT BLUETOOTH AUDIO | COMPACT SIZE **2.6kg**  
UP TO **391"** | **3000** | **AUTO VERTICAL KEYSTONE ADJUSTMENT** | **5W**  
SCREEN SIZE | LUMENS | MONO SPEAKERS



THE VERSATILE HOME ENTERTAINMENT PROJECTOR

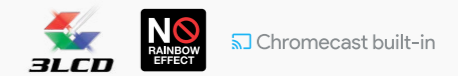
### CO-FH01



POWERED BY  
**androidtv**

\*Dongle purchased separately.

RESOLUTION **Full HD 1080p** | SUPPORT BLUETOOTH AUDIO | COMPACT SIZE **2.4kg**  
UP TO **391"** | **3000** | **5W**  
SCREEN SIZE | LUMENS | MONO SPEAKERS



WORLD'S SMALLEST 3LCD LASER PROJECTOR<sup>^</sup>

### EpiqVision Mini EF-11

EpiqVision



Over **2,500,000:1** Contrast Ratio | RESOLUTION **Full HD 1080p**  
UP TO **150"** | **1000** | **AUTO VERTICAL KEYSTONE ADJUSTMENT** | **1.5W**  
SCREEN SIZE | LUMENS | MONO (2-WAY) SPEAKERS



WORLD'S SMALLEST 3LCD LASER PROJECTOR<sup>^</sup> WITH ANDROID TV™

### EpiqVision Mini EF-12

EpiqVision



sound by **YAMAHA** POWERED BY **androidtv**

Over **2,500,000:1** Contrast Ratio | RESOLUTION **Full HD 1080p** | SUPPORT BLUETOOTH AUDIO | **5W**  
UP TO **150"** | **1000** | **AUTO VERTICAL & HORIZONTAL KEYSTONE ADJUSTMENT** | **5W**  
SCREEN SIZE | LUMENS | STEREO SPEAKERS



<sup>^</sup>Survey conducted by FutureSource Consulting Limited, for 3LCD laser projectors of more than 500lm in brightness, as of 22nd Oct, 2020.  
<sup>1</sup>Wi-Fi CERTIFIED Miracast™ is a trademark of Wi-Fi Alliance®. <sup>2</sup>Support up to 4k/60Hz 4:2:0 8bit.



## Aesthetically pleasing no matter where you place it

Take your home viewing experience to the next level with Epson's Android TV™ ready lineup\*. Chill and stream endless entertainment contents online using Android TV™ from the comfort of your living room.



EH-TW6250



EH-TW7000

### EpiqVision Ultra



EH-LS300B



EH-LS800B

\*Selected models only.

## Immersive and Frameless Large Sized Display

Maximise your on-screen entertainment with these feature-packed projectors, providing a frameless capability by breaking image size constraints. Your best alternative for home entertainment, projecting up to a 500-inch\* screen size – much larger than what a conventional TV screen can provide.



## Complete the Big Screen Experience with ELPSC35 ALR Screen

For EpiqVision Ultra EH-LS300B & EH-LS800B

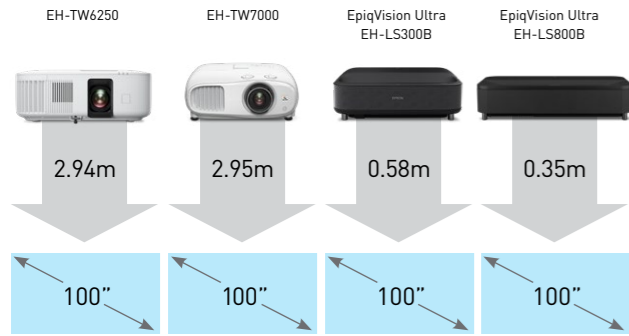
Be immersed in a cinematic experience right at home with 4K content on the ELPSC35 ALR Screen. With the ambient light rejecting ability, be prepared to get blown away by the vibrant and realistic images with better contrasts and deeper blacks enhanced for your viewing pleasure.



^For EH-TW7000 and EH-TW6250.

## Flexible Placement Optimal Placement

These sleek and compact projectors blend in seamlessly anywhere in your living space. Choose a projector that fits your requirement from a wide range of choices.

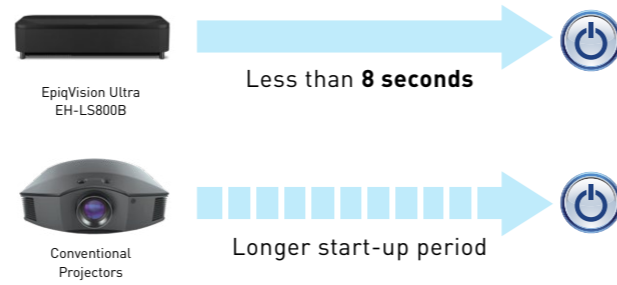


Standard Screen's Throw distance

## Plug-and-Play Quick Start-Up

For EH-LS300B and EH-LS800B

You no longer have to wait to boot up your EpiqVision projectors to begin watching your favourite shows. With the shorter start-up time compared to a conventional projector setup, enjoy your favourite shows with a simple click on the remote.



## Fine-tune your sound experience with YAMAHA speaker

For EpiqVision Ultra EH-LS300B and EH-LS800B



Bask in a multi-dimensional true sound with 3D surround, designed with YAMAHA's unique DSP processing technology – AudioEngine™. Striking a careful balance and delivering controlled beams of sound, you can now immerse in spectacularly powerful and supreme sound quality, regardless of whether it is a clear acoustic sound or rich bass music.

Choose the most suitable music mode based on the content you are playing:

- STUDIO** For Music
- STADIUM** For Sports
- CONCERT** For Live Music
- KARAOKE** For Singing
- TV** For Broadcasting
- THEATRE** For Movie

sound by **YAMAHA**

## Flexible, Immersive Projection.

SMART 4K UHD HOME THEATRE PROJECTOR

### EH-TW6250



POWERED BY  
**androidtv**

RESOLUTION 4K PRO-UHD

UP TO **500"** SCREEN SIZE | **2800** LUMENS | **AUTO VERTICAL KEYSTONE ADJUSTMENT** | **10W** MONO SPEAKERS

3LCD | NO RAINBOW EFFECT | HDR | Chromecast built-in

FULL-HD 3D HOME THEATRE PROJECTOR

### EH-TW7000



RESOLUTION 4K PRO-UHD

UP TO **500"** SCREEN SIZE | **3000** LUMENS | **VERTICAL & HORIZONTAL KEYSTONE ADJUSTMENT**

3LCD | NO RAINBOW EFFECT | 3D

## ULTRA SHORT THROW PROJECTOR SERIES

SMART FULL-HD LASER PROJECTION TV

### EpiqVision Ultra EH-LS300B



POWERED BY  
sound by **YAMAHA** **androidtv**

Over **2,500,000:1** Contrast Ratio | RESOLUTION **Full HD 1080p**

UP TO **120"** SCREEN SIZE @ JUST 0.70m | **3600** LUMENS | **MOTION SENSOR LASER LIGHT SAFETY** | UP TO **20W** SOUND OUTPUT INCL. 1x WOOFER

3LCD | NO RAINBOW EFFECT | LASER LIGHT SOURCE | 4K INPUT SUPPORT | Chromecast built-in

SMART 4K PRO-UHD LASER PROJECTION TV

### EpiqVision Ultra EH-LS800B



POWERED BY  
sound by **YAMAHA** **androidtv**

Over **2,500,000:1** Contrast Ratio | RESOLUTION 4K PRO-UHD

UP TO **150"** SCREEN SIZE @ JUST 0.54m | **4000** LUMENS | UP TO **20W** SOUND OUTPUT INCL. 1x WOOFER

3LCD | NO RAINBOW EFFECT | LASER LIGHT SOURCE | 4K INPUT SUPPORT | Chromecast built-in

<sup>1</sup> Support up to 4K/60Hz 4:2:0 8bit.



## Inspiring New Viewing Experiences

With ease of installation, wider lens shift, 4K resolution<sup>1</sup>, and less light leakage, you can now enjoy your favourite movies in a perfect viewing environment. Experience breathtaking and vivid projection quality with Epson's Bright Cinema mode, and customise each show according to your preferences, thanks to the picture quality processing functions<sup>2</sup>.



EH-TW9400



EH-LS12000B

## Exceptional Realism Stunning 4K Experience\*

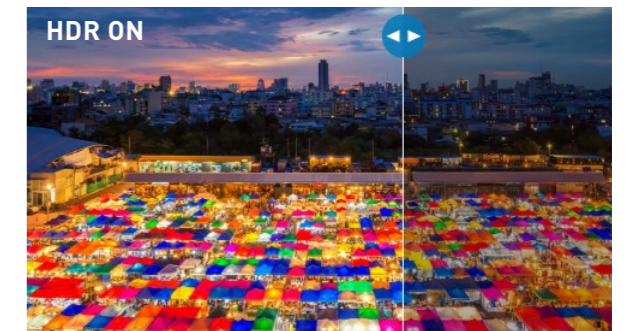
Make your home the centre stage for all the action with the advanced pixel-shifting technology that works in parallel with three individual high-definition LCD chips to produce an exceptionally sharp 4K picture without sacrificing on brightness.



\*Achieved by shift-technology.

## Breathtaking, Phenomenal Images The Evolution of HDR

Showcasing the finest details even for the most subtle shadow tones. HDR is a key technology emphasized by filmmakers that helps convey the visual intent of a film more faithfully.



HDR10+™ logo is a trademark of HDR10+ Technologies, LLC.\*

<sup>1</sup> For EH-LS12000B. <sup>2</sup> Scene adaptive gamma, auto contrast enhancement and 4k frame interpolation are only for EH-LS12000B model.

## Flexibility in Installation Wide-range Lens Shift

With the wide range powered lens shift and zoom function that only high-end home models provide, it allows extraordinary installation flexibility that can be installed in living rooms as well as dedicated home theatre rooms with no worry for obstructions!



## Smooth Fast-Moving 4K Video Frame Interpolation

For EH-LS12000B

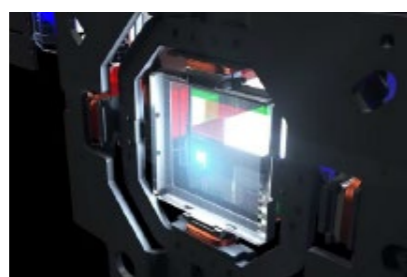
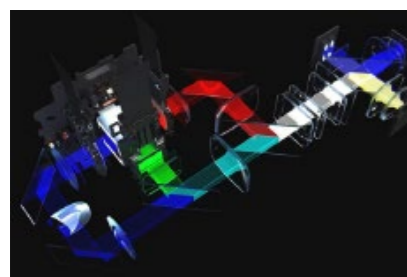
With the improved frame interpolation technology, never miss out on any detail when watching fast-moving sports or gaming. Get clear image contours and smooth motion for a more holistic 4K viewing experience.



## Ultimate State-Of-The-Art Big Screen Experience

For EH-LS12000B

Bring home the state-of-the-art cinema experience with Epson's premium model - the EH-LS12000B. This laser model delivers phenomenal image quality for an enthralling big screen experience.



### New and Improved Laser Diode Package For Unparalleled Colour Realism

Equipped with a unique cutting-edge laser optical engine, the EH-LS12000B delivers incredible contrast and 2,700 lumens of equal white and colour brightness from jet black to rich, vibrant colours with its superb colour reproduction<sup>1</sup>.

### 2-axis shifting 4K Innovation For Clear Precise Images

Using Epson's proprietary shift device technology<sup>2</sup> and quietness-enhancing technology in the shift device, the high aperture ratio 1080p panel is upscaled to 4K, achieving 8.3mil pixels. Delivering bright and vivid images in every projection, the LS12000B projects with incredible accuracy and precision.

### Dedicated 4K Lens For Consistent Focus

Made in Japan, this high-quality 4K lens ensures high focus level (even when zoom to maximum of x2.1). The lenses coupled with the new 4K image processing chip which supports HDR10 and HDR10+ allows better colour reproduction and management, for the ultimate unrivalled experience.

## Phenomenal Brilliance.

HIGH DYNAMIC 4K PRO-UHD HOME THEATRE PROJECTOR

### EH-TW9400



1,200,000:1  
Contrast Ratio

RESOLUTION 4K PRO-UHD

UP TO 300"  
SCREEN SIZE

2600  
LUMENS

POWERED  
LENS SHIFT



PREMIUM 4K ULTRA HD HOME THEATRE PROJECTOR

### EH-LS12000B



Over 2,500,000:1  
Contrast Ratio

RESOLUTION 4K

UP TO 300"  
SCREEN SIZE

2700  
LUMENS

POWERED  
LENS SHIFT



HDR10+™ logo is a trademark of HDR10+ Technologies, LLC.™

## The advantage of Laser Projector

For EH-LS12000B

Next generation laser light source offers improved usability and reliability compared to conventional lamp light sources.



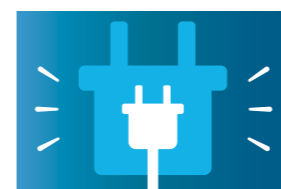
Only 8 seconds to start up from power on<sup>1</sup>



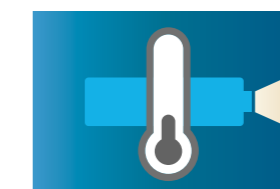
Multiple brightness adjustment settings



Maintenance-free, no lamp replacement<sup>2</sup>



Low power consumption is friendly for both home and the environment.



Long-life design<sup>3</sup>



Reduced light leakage in theater room environments<sup>4</sup>

<sup>1</sup> Improved compared to previous Epson 3LCD lamp projectors.

<sup>2</sup> Epson patented unique feedback control technology ensures precise and unmatched shift device movement.

<sup>1</sup> Supports fast-on lighting.

<sup>2</sup> Use of multiple laser diodes makes light source more reliable than a lamp. Additionally provides a light source life of 20,000 hours.

<sup>3</sup> Low-temperature light source brings lower impact on peripheral components and increased deterioration resistance.

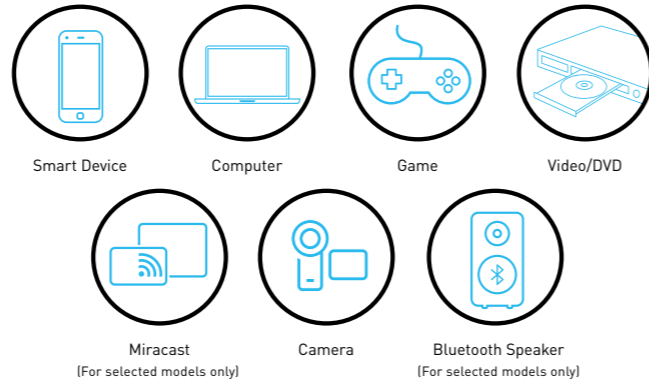
<sup>4</sup> Products using laser light sources are designed for better hermetic sealing to minimize light leakage.



## OTHER FEATURES

### Wide Range of Connectivity

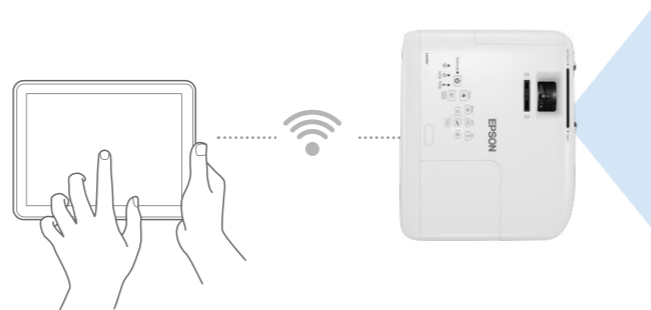
Home entertainment is now made more accessible than ever! Epson's own range of projectors allows integrated support for multiple connection methods including HDMI connection to suit a wide range of entertainment devices.



### Built-in Wireless Projection\*

Projecting high-contrast, vivid high-definition images smoothly is made possible with the built-in wireless transmission function in Epson's projectors. Conveniently project and enjoy your favourite shows and movies directly from Android and Apple iOS smart devices and PCs via Wi-Fi or Miracast today.

\*Selected models. Check the model specification for more information.



### Compact Design for Easy Ventilation

The sleek and compact designs of Epson's home entertainment projectors allow you to easily install them even in the narrowest of spaces. With air intake valves positioned at the front, you will no longer have to worry about ventilation.

**TRUE COLOURS**  
Brighter, vivid projection from Epson

# Unveil The True Colours

**EPSON**



**True BRIGHTNESS**

**True COMFORT**

**True REALISM**

Up to 3x Brighter Colours

No Rainbow Effect

3x Wider Colour Gamut



WHITE 3000 LUMENS  
COLOUR 3000 LUMENS

LIGHT SOURCE    PRISM

WIDER COLOUR RANGE



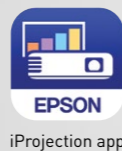
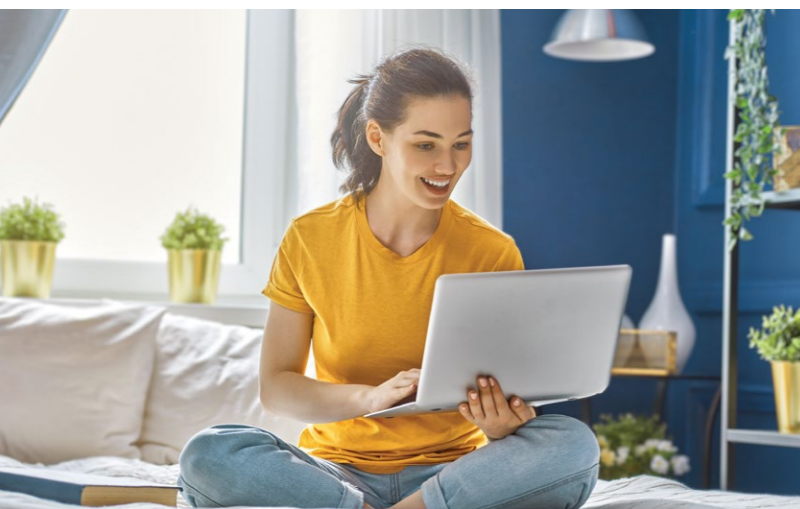
WHITE 3000 LUMENS  
COLOUR 430 LUMENS\*\*

LIGHT SOURCE    ROTATING COLOUR WHEEL

SMALLER COLOUR RANGE

EPSON 3LCD PROJECTORS

1 - CHIP PROJECTORS





## SPECIFICATIONS

<b>MODEL NUMBER</b>	<b>EH-TW6250</b>		
<b>Projection Technology</b>	RGB liquid crystal shutter projection system		
<b>Specifications of Main Parts</b>			
LCD	Size	0.61" wide panel (D10, C <sup>2</sup> Fine, 10Bit)	
	Native Resolution	Full HD (1080p)	
	Projection Lens	Type	Optical Zoom (Manual) / Focus (Manual)
		F-Number	1.49 – 1.77
		Focal Length	18.2 – 29.2 mm
	Zoom Ratio	1 – 1.62	
Throw Ratio	1.32 – 2.15 (Wide – Tele)		
Lightsource	Type	Lamp: 200W UHE	
	Lamp Life <sup>1</sup>	Normal: 4,500 / Eco: 7,500 hours	
<b>Screen Size (Projected Distance)</b>			
Zoom: Wide	40" to 500" [1.15 to 14.83 m]		
Zoom: Tele	40" to 500" [1.89 to 24 m]		
Standard Size	80" screen 2.34 to 3.81 m		
<b>Brightness<sup>2</sup></b>			
Colour Light Output	2,800 lm		
White Light Output (Normal / Eco)	2,800 lm / 1,900 lm		
<b>Contrast Ratio</b>	35,000:1		
<b>Internal Speaker(s)</b>			
Sound Output	10W Monaural		
<b>Geometric Correction</b>			
Vertical / Horizontal Keystone	±30° / ±30°		
Auto Keystone Correction	Yes (Vertical ±30°, Zoom: Tele)		
Horizontal Slide Keystone Correction	Yes		
Quick Corner	Yes		
<b>Lens Shift Range</b>			
Lens Shift	Vertical: ±60%		
<b>Connectivity</b>			
Digital Input	HDMI	1 (HDCP 2.3)	
Audio Out		Stereo Mini Jack x 1	
USB Interface	USB Type B	1 (for Firmware Update and Copy OSD Settings)	
<b>Wireless Specifications (Smart Media Player Function)</b>			
<b>Wireless LAN</b>			
Wi-Fi Generation	Wi-Fi 5		
Supported Speed For Each Mode	IEEE 802.11a (5GHz), IEEE 802.11b (2.4GHz), IEEE 802.11g (2.4GHz), IEEE 802.11n (2.4GHz and 5GHz), IEEE 802.11ac (5GHz) <sup>3</sup>		
<b>Bluetooth</b>			
Version	5.0		
Frequency Used	2.4GHz		
Supported Codec	SBC		
Supported OS	Android OS		
Supported VOD Platform	Android TV		
Video Output Resolution	Up to 3,840 x 2,160 60fps 4:4:4		
<b>Adjustment Functions</b>			
Aspect Mode	Yes (Auto / Normal / Full / Zoom)		
<b>Operating Temperature</b>			
	5 - 35 °C <41 - 95 °F> (0m / 0ft - 2,286m / 7,500ft) 5 - 30 °C <41 - 86 °F> (Over 2,286m / 7,500ft) (20% - 80% Humidity, No Condensation)		
<b>Operating Altitude</b>	0 m to 3,048 m <0 ft to 10,000 ft> (over 1,500 m / 4,921 ft : with High Altitude mode)		
<b>Direct Power On / Off</b>	Yes / N/A		
<b>Start-Up Period</b>	Under 15 seconds Warm-up period: 30 seconds		
<b>Cool Down Period</b>	Under 5 seconds		
<b>Power Supply Voltage</b>	100 - 240 V AC ±10%, 50/60 Hz		
<b>Power Consumption (220 - 240V)</b>			
Lamp On (Normal / Quiet, Extended)	301W / 231W		
Energy Saving	0.3W		
<b>Dimension Excluding Feet (D X W X H)</b>	275 x 333 x 123 mm		
<b>Weight</b>	Approx. 4.1kg		
<b>Fan Noise (Normal / Eco)</b>	36dB / 28dB		

<sup>1</sup> Lamp life will vary depending upon mode selected, environmental conditions and usage. Lamp brightness decreases over time.

<sup>2</sup> Colour brightness (colour light output) and white brightness (white light output) will vary depending on usage conditions. Colour light output measured in accordance with IDMS 15:4; white light output measured in accordance with ISO 21118.

<sup>3</sup> These modes and actual data throughputs depend on supported wireless mode of source devices and/or environmental conditions.

### Supplied Accessories

Power Cable: 3m x 3 (Black)  
Remote Control with 2 x AAA Battery  
Interface Cover  
Bluetooth Remote Control for SMP with 2 x AAA Battery  
User Guide

### Optional Accessories

Spare Lamp: ELPLP97  
Air Filter: ELPAF54  
Ceiling Mount (White Colour): ELPMB23  
Safety Wire: ELPWR01  
Streaming Media Player: ELPAP12



©2023 Epson Singapore Pte Ltd. All Rights Reserved. Reproduction in part or in whole, without the written permission from Epson, is strictly prohibited.

EPSON is a registered trademark of Seiko Epson Corporation.

All other product names and other company names used herein are for identification purposes only and are the trademarks or registered trademarks of their respective owners.

Epson disclaims any and all rights in those marks. Projected images shown herein are simulations. The actual product design and contents may vary. Specifications are subject to change without notice and may vary between countries. Please check with local Epson offices for more information.

Apple, iPad and iPhone are trademarks of Apple Inc., registered in the U.S. and other countries. App Store is a service mark of Apple Inc.

Android is a trademark of Google Inc.

Dealer's Stamp

Information correct at time of printing.  
Printed February 2023

## SPECIFICATIONS

<b>MODEL NUMBER</b>	<b>EH-TW7000</b>		
<b>Projection Technology</b>	RGB liquid crystal shutter projection system (3LCD)		
<b>Specifications of Main Parts</b>			
LCD	Size	0.61" wide panel (C <sup>2</sup> Fine, 10 Bit)	
	Native Resolution	Full HD (1080p)	
Resolution On-Screen (Maximum)	Resolution	4K <sup>1</sup>	
	Pixel Number	4.2M Dots (1920 x 1080 x 2)	
	Projection Lens	Type	Optical Zoom (Manual) / Focus (Manual)
		F-Number	1.49 – 1.77
		Focal Length	18.2 – 29.2 mm
	Zoom Ratio	1 – 1.62	
Throw Ratio (Wide – Tele)	1.32 – 2.15		
Lightsource	Type	Lamp: 250W UHE	
	Lamp Life <sup>2</sup>	High: 3,500 / Medium: 4,000 / Eco: 5,000 hours	
<b>Screen Size (Projected Distance)</b>			
Zoom: Wide	40" to 500" [1.16 to 14.87 m]		
Zoom: Tele	40" to 500" [1.89 to 24.01 m]		
Standard Size	100" screen 2.95 to 4.77 m		
<b>Brightness<sup>3</sup></b>			
Colour Light Output	3,000 lm		
White Light Output (Normal / Eco)	3,000 lm / 2,000 lm		
<b>Contrast Ratio</b>	40,000:1		
<b>Geometric Correction</b>			
Vertical / Horizontal Keystone	±30° / ±30°		
<b>Image Enhancement</b>			
4K Enhancement	Yes (On/Off)		
Picture In Picture	N/A		
Aspect Mode	Yes (Auto / Normal / Full / Zoom)		
Frame Interpolation	Off / Low / Normal / High (2D and 3D Mode)		
Image Preset Mode	Yes		
MPEG Noise Reduction	Yes		
Super Resolution	Yes		
Detail Enhancement	Yes		
<b>3D Features</b>			
3D Display	Yes		
2D – 3D Conversion	N/A		
3D Format	Side by Side / Top and Bottom		
3D Depth	-10 to +10		
<b>Connectivity</b>			
Analog Input	D-Sub 15Pin	N/A	
	5BNC	N/A	
Digital Input	DVI-D	N/A	
	HDMI	2 (HDCP 2.2)	
Output Terminal	D-Sub 15Pin	N/A	
	Stereo Mini Jack	N/A	
Audio Input	Stereo Mini Jack	1	
Audio Output	Stereo Mini Jack	1	
Others	USB Type A	2	
		(Port1: Wireless LAN, Firmware Update, Copy OSD Settings) (Port 2: for Streaming Media Player with 2,000 mA Power Supply) 1 (for Service, Firmware Update)	
Control I/O	USB Type Mini-B	N/A	
	RS-232C	N/A	
Network	Remote Control Input	NA	
	Wired LAN	N/A	
	Wireless	Optional (ELPAP10)	
<b>Wireless Specification</b>			
Supported Connection Mode	Infrastructure, Access Point		
Supported Speed For Each Mode	IEEE 802.11b (2.4GHz): 11 Mbps <sup>4</sup> , IEEE 802.11g (2.4GHz): 54 Mbps <sup>4</sup> , IEEE 802.11n (2.4GHz): 130.0 Mbps <sup>4</sup> ,		
Wireless LAN Security	Quick Mode: WPA2-PSK		
	Advanced Mode: WPA/WPA2-PSK		
<b>Operating Temperature</b>			
	5 - 35 °C <41 - 95 °F> (0m / 0ft - 2,286m / 7,500ft) 5 - 30 °C <41 - 86 °F> (Over 2,286m / 7,500ft) (20% - 80% Humidity, No Condensation)		
<b>Operating Altitude</b>	0 m to 3,048 m <0 ft to 10,000 ft>		
<b>Direct Power On / Off</b>	Yes / N/A		
<b>Start-Up Period</b>	Up to 19 seconds, Warm-up Period: 30 seconds		
<b>Cool Down Period</b>	Up to 7 seconds		
<b>Power Supply Voltage</b>	100 - 240 V AC ±10%, 50/60 Hz		
<b>Power Consumption (220 - 240V)</b>			
Lamp (Normal / Eco)	368W / 280W		
Standby (Network On / Off)	2.0W (Optional Wireless LAN) / 0.5 W		
<b>Dimension Excluding Feet (D X W X H)</b>	310 x 410 x 157 mm		
<b>Weight (Including Standard Lens)</b>	Approx. 6.6 kg		
<b>Fan Noise (Normal / Eco)</b>	35dB / 24dB		

<sup>1</sup> Pixel shift technology.

<sup>2</sup> Lamp life will vary depending upon mode selected, environmental conditions and usage. Lamp brightness decreases over time.

<sup>3</sup> Colour brightness (colour light output) and white brightness (white light output) will vary depending on usage conditions. Colour light output measured in accordance with IDMS 15:4; white light output measured in accordance with ISO 21118.

<sup>4</sup> These modes and actual data throughputs depend on supported wireless mode of source devices and/or environmental conditions.

### Supplied Accessories

Power Cable: 3m x 1  
Remote Control with 2 x AA Battery  
User Manual CDROM  
Quick Start Guide

### Optional Accessories

Spare Lamp: ELPLP85  
Air Filter: ELPAF39  
Wireless LAN unit: ELPAP10  
Ceiling Mount: ELPLMB22



©2023 Epson Singapore Pte Ltd. All Rights Reserved. Reproduction in part or in whole, without the written permission from Epson, is strictly prohibited.

EPSON is a registered trademark of Seiko Epson Corporation.

All other product names and other company names used herein are for identification purposes only and are the trademarks or registered trademarks of their respective owners.

Epson disclaims any and all rights in those marks. Projected images shown herein are simulations. The actual product design and contents may vary. Specifications are subject to change without notice and may vary between countries. Please check with local Epson offices for more information.

Apple, iPad and iPhone are trademarks of Apple Inc., registered in the U.S. and other countries. App Store is a service mark of Apple Inc.

Android is a trademark of Google Inc.

Dealer's Stamp

Information correct at time of printing.  
Printed February 2023

Find out more at [www.epson.com.sg/projectors](http://www.epson.com.sg/projectors)



epsonsg



EpsonSingapore



EpsonSoutheastAsia



Epson Southeast Asia

**Epson Singapore Pte Ltd** 438B Alexandra Road, Block B Alexandra Technopark, #04-01/04, Singapore 119968. Tel: (65) 6586-5500  
**Epson Customer Care Center** 100G Pasir Panjang Road, #01-09 Interlocal Centre, Singapore 118523. Epson Helpdesk: 800 120 5564. Please refer to [www.epson.com.sg/contact](http://www.epson.com.sg/contact) for opening hours.

Find out more at [www.epson.com.sg/projectors](http://www.epson.com.sg/projectors)



epsonsg



EpsonSingapore



EpsonSoutheastAsia



Epson Southeast Asia

**Epson Singapore Pte Ltd** 438B Alexandra Road, Block B Alexandra Technopark, #04-01/04, Singapore 119968. Tel: (65) 6586-5500  
**Epson Customer Care Center** 100G Pasir Panjang Road, #01-09 Interlocal Centre, Singapore 118523. Epson Helpdesk: 800 120 5564. Please refer to [www.epson.com.sg/contact](http://www.epson.com.sg/contact) for opening hours.

